

The logo consists of the letters 'D' and 'S' in a bold, white, sans-serif font, positioned on a solid orange background.

# Inobiz Development System

**Inobiz DS is the Graphical Data Mapping tool you use to create format conversions.**

In Inobiz DS visual environment, it is easy to create conversions to be executed by the integration platform Inobiz Integration Server IS or by the integration engine Run Time RT.

Complicated transformations of data are made without any problems by using the user friendly integrated programming language Inobiz EDI-C. The more than 400 built-in functions in EDI-C will allow you to process data according to your needs.

## User friendly environment

---

Inobiz DS sets source format and target format so that you, as a developer, can connect and transform data between the formats.

The formats built into Inobiz DS :

- |            |                      |
|------------|----------------------|
| - XML      | - JSON               |
| - EDIFACT  | - SQL                |
| - ODETTE   | - Flat files         |
| - X12      | - CSV files          |
| - TRADACOM | - Microsoft™Excel    |
| - HL7      | - Large files (>2GB) |

With these features as a starting point, you can convert between almost all known formats. In Inobiz DS you just connect in-data to out-data by dragging and dropping links with the mouse.

**As a starting point you can use:**

- EDIFACT- or X12-catalogs
- XML- or XSD-document
- An existing SQL-database
- WSDL (Web Services)

## Powerful Functions

---

The basis for Inobiz integration products is the programming language EDI-C, whose syntax is based on C. With EDI-C, you have the tools to easily create comprehensive integrations;

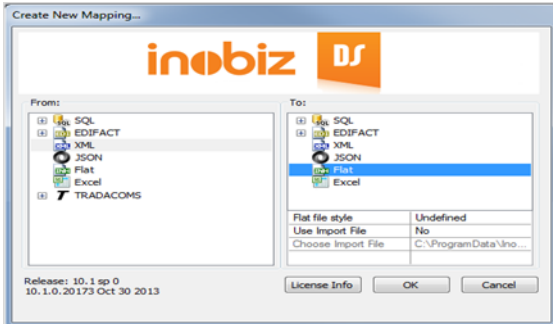
**Exampel of built in functions and support**

- Debugging and logging
- Error detection
- Verifying of in- and out-files
- Handling XML-schemas
- String handling
- Arithmetic and editing
- Management of EDIFACT, XML and flat file structures
- Processing of physical files
- Token processing
- Accessing COM-objects
- File and Folder management
- Time and Date handling
- Embedded SQL



# Inobiz Development System

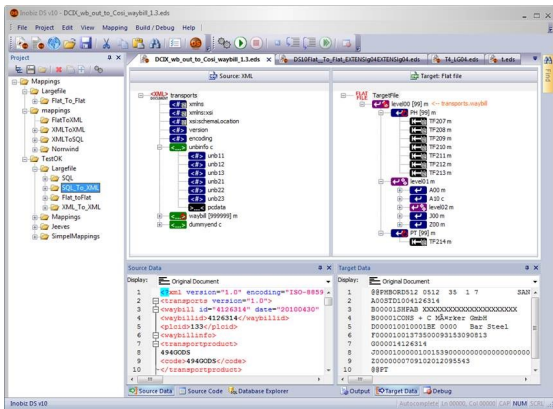
## Graphical Data Mapping, Conversion and Transformation



Inobiz DS includes the most common format catalogues for EDIFACT, ODETE, X12, TRADACOM and JSON.

New message definitions may be added and existing catalogues may be modified by the user.

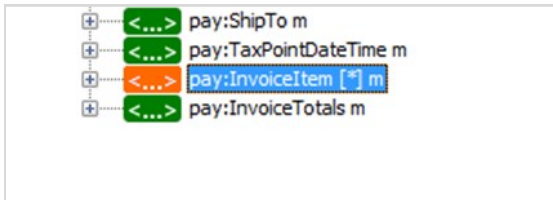
The complete embedded SQL can be used, even calls to Stored Procedures.



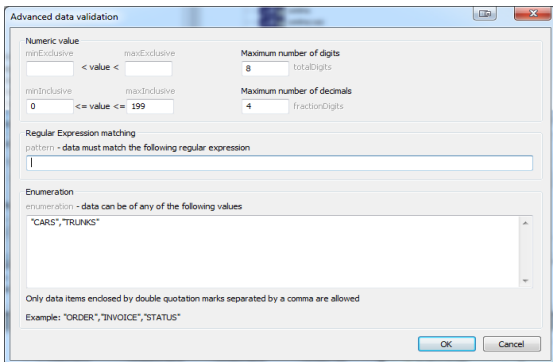
In Inobiz DS you just connect in-data to out-data by dragging and dropping links with the mouse.

In the visual environment, it is easy to create conversions to be executed by the integration platform Inobiz IS or by the integration engine Inobiz RT.

Complicated transformations of data are done without any problems by using the user friendly integrated programming language Inobiz EDI-C. The more than 400 built-in functions in EDI-C will allow you to process data according to your needs.

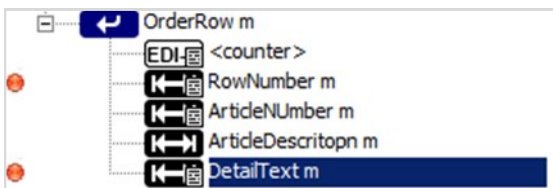


In Inobiz DS it is easy to do a **Large File Mapping**. Find the repeating element, mark it as "serial" and that is all that is needed for creating a so called Large File Mapping. Now files of several GB can be processed.



Inobiz DS contains comprehensive support for data and error analysis.

There is support for **advanced data validation** of both format and data. Validations rules in XML-schemas are imported automatically and you may choose how to treat exceptions to the validation rules.



Inobiz DS supports comprehensive debugging features like Trace and Stepwise Debugging using **breakpoints**.

This makes it easy to check that the result of a mapping is correct and to detect potential mapping errors.

